



Cable and pipe transit
brochure for the
shipping industry

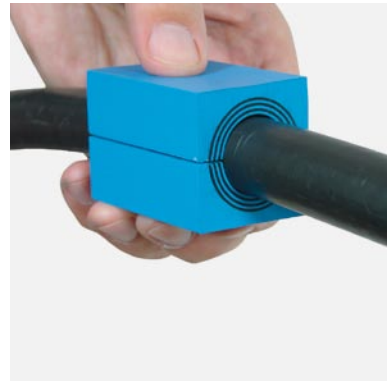
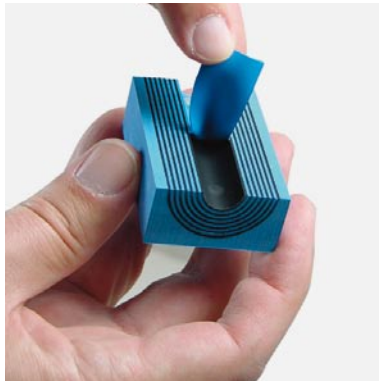


Cable and pipe seals with multidiameter technology



The Roxtec sealing system

Wherever cables or pipes penetrate decks or bulkheads the integrity of the structure is exposed to threats. Using Roxtec assures that the integrity is taken care of, even under the constant vibrating conditions onboard a vessel.



The Roxtec sealing system provides certified protection. It is a modular sealing system using a frame, a compression unit and sealing modules to seal a transit. It is also a mechanical seal that provides certified protection. The built in flexibility provides fast and simple installation and easy future reconfiguration.

Multidiameter™ technology
One of its unique features is the multidiameter module. The modules consist of two halves of EPDM based rubber, with removable layers and a centre core. Thanks to the multi-layer technique, individual modules can handle cables or pipes of different diameters simply by peeling layers away from the module halves.

Future included

Roxtec's transits can be opened and reconfigured at any time, thereby reducing maintenance costs.

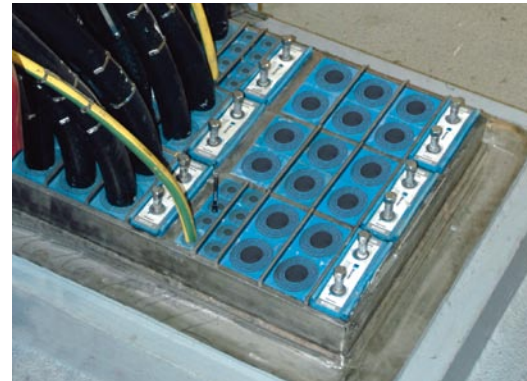
Built-in spare capacity

Any unused modules in the frame form an excellent spare capacity. New cables or pipes are easily added during construction work or later on.

Easy maintenance

A Roxtec seal is easily opened and closed for maintenance. It requires no hot working or

extra preparations. As a result maintenance work can be carried out by your own technical personnel at sea, at port or whenever there is a need for it. Our seals can be reconfigured repeatedly without any need for re-certification.



Certified protection

Roxtec's sealing system has been tested and approved for use in A and H class rated sections.



Roxtec's cable and pipe transits help to ensure operational reliability by protecting from hazards induced by water pressure, fire, gas and vibrations. In addition, a special EMC version can be used to prevent electromagnetic disturbances from interfering with the equipment.

The system is also approved for use in water and gas pressures up to 4 bar, and we comply with the marine equipment directive (MED). Since certification is constantly updated, please contact us for further information.

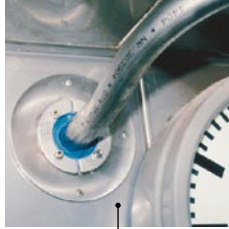
The Roxtec sealing system is approved in accordance with IMO 754 (18) for use in A and H class



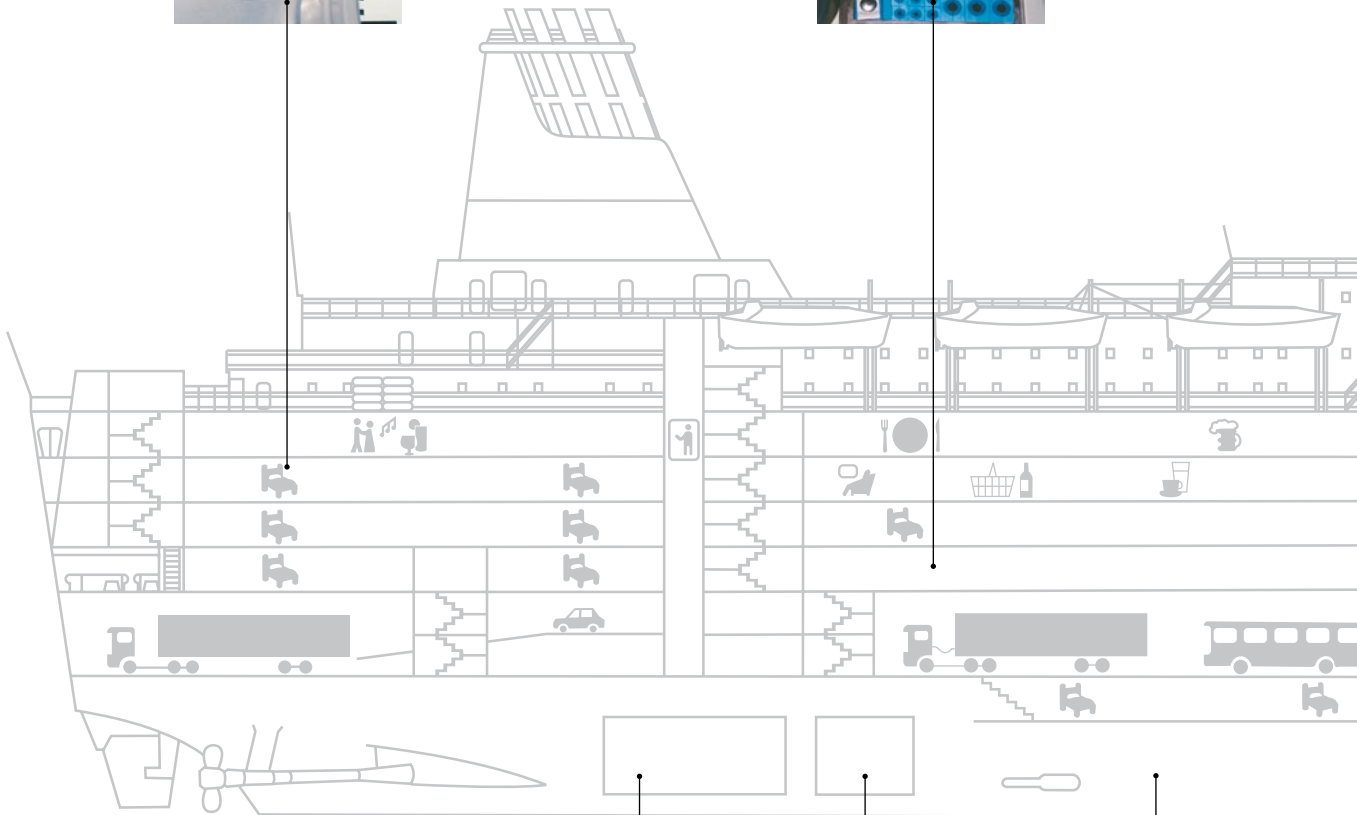
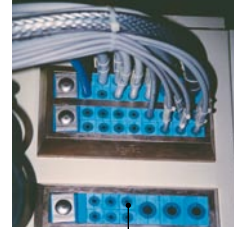
Marine applications

The pictures should only be seen as examples of where our products can be used. The wide product range means that there is virtually no restriction of where our transits can be installed.

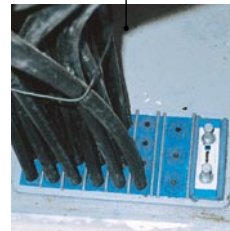
Roxtec RS for single cables or pipes: in this case sprinkler system application.



Roxtec CF 32 for enclosure installation in engine control room.



Roxtec RS seals for pipes in main engine room.

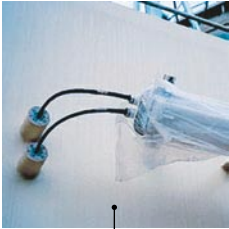


Welded frame for switchboard installation.



Frame with rounded corners (SRC) avoids cracks in the bulkheads around cable or pipe inlets.

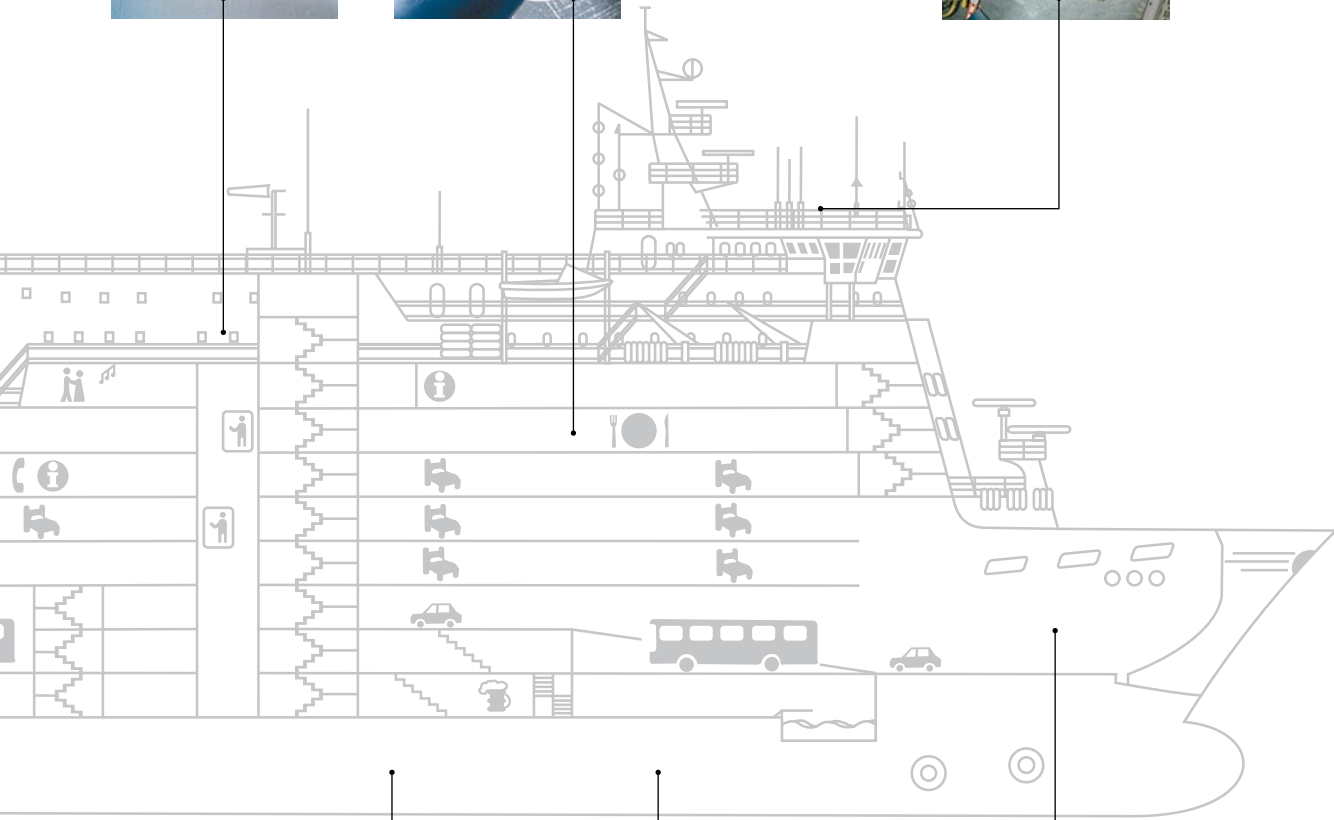
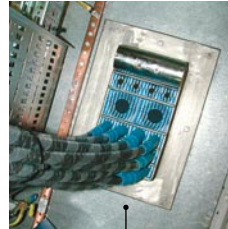
Round seals for external lighting fittings.



Roxtec plastic pipe seal for Thermoplastic pipes



Roxtec EMC installation for radar and navigation equipment in wheelhouse.



Roxtec S frame with power cables for generator sets.



Combination frame for fireproof, watertight bulkheads or decks.



Roxtec R frame for hydraulic or pneumatic tubes.

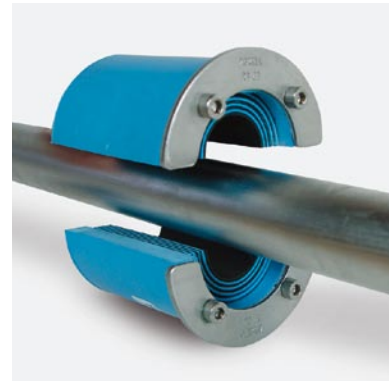
Getting it right from the start



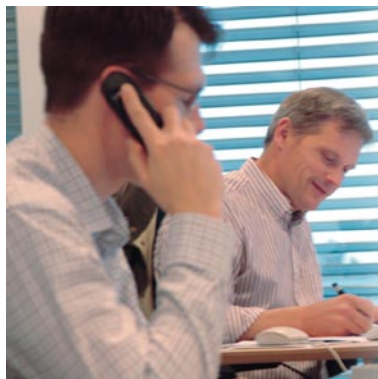
On all sorts of vessels, due to continuous additions of equipment and upgrades, the need for new cable and pipe routing increases constantly. This requires flexible, cost efficient and future-proof cable entries, which can be reopened and reconfigured at any time. By choosing Roxtec from the start you have a built-in flexibility and future spare capacity that will save you a vast amount of time and money.

Upgrades and Retrofit

Roxtec has a number of different solutions for upgrades and retrofit installations. Whether previously routed cables or pipes, or new installations, Roxtec has a wide assortment of products. For areas where hotwork is not allowed we have round seals, RSX and RX, for single or a few cables or pipes, or the GHM frame for multi cable penetrations.



Global support



We have a network of representatives in more than 80 markets as well as subsidiaries in several countries. Whether you require our products for a new construction or maintenance for an existing vessel, the local distributors together with our Technical Service department in Sweden, will make sure you get the support needed.

Solutions for every need

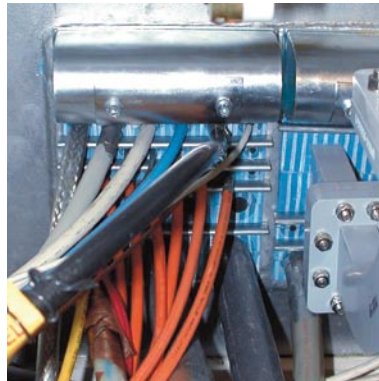


Standard solutions

Roxtec's standard system for marine and offshore applications is made up of a number of frame types, in different shapes and materials. They can either be welded or bolted onto the bulkhead or deck.

There are also frames for use in decks and bulkheads subjected to a high degree of stress, and frames developed for installations with extreme safety demands against pressure and fire.

All standard frames are used with Roxtec's multidiameter modules and



the Roxtec wedge. When it comes to cables and pipes routed through round openings, our round aperture frames and seals are a good choice.

Shielded solutions

The Roxtec EMC system is available in two types: PE (Potential Equalization) and ES (Electromagnetic Shielding). Both make use of a conductive tape which provides an effective 360 degree low-impedance contact with each individual cable shield. The 25 millimetres contact surface leads the shield-bound interference through the frame to earth. The ES type also has a shield of



conductive rubber, which provides effective protection from electromagnetic fields.

Cabinet solutions

Our compact solutions are easy to install and are suitable for certain applications, for example in cabinets, where the required ratings are different (max IP 66/67). The frames accommodate cables and pipes up to 32.5 millimetres in diameter, creating an efficient use of valuable space.

Please refer to our product catalog for technical information.

The Roxtec solution was born in an entrepreneurial spirit in 1990: a simple, adaptable seal that could solve problems associated with cable and pipe penetrations. The rest is now history. Our transits have become the industry standard, and Roxtec is the largest supplier in the business. Roxtec is represented locally in all of the large marine and offshore markets, for example, China, South Korea, Japan, France, Italy, the United States, Norway and Singapore.

Among our customers you find:

Aker Yards, AP Möller, Avondale Industries, Bergesen DY ASA, Brostrom AB, Carnival Corporation, Chantiers de l'Atlantique, China Shipping Company, Color Line, Dalian Shipyard, Disney Cruise Lines, Fincantieri, Holland America Line, Jiangnan Shipyard, Kvaerner Fjellstrand, Meyer Werft, Mitsubishi Heavy Industries, P&O European Ferries, Princess Cruises, Royal Caribbean Cruise Line, Spanish Navy, US Navy

Find out more

Learn more about us, and find your nearest Roxtec representative at **www.roxtec.com**



Roxtec International AB
Box 540, 371 23 Karlskrona, SWEDEN
PHONE +46.455.36 67 00, FAX +46.455.820 12
EMAIL info@roxtec.se, www.roxtec.com